

**10015 CHARLOTTE CT.
DOWNING FARM
\$449,950**

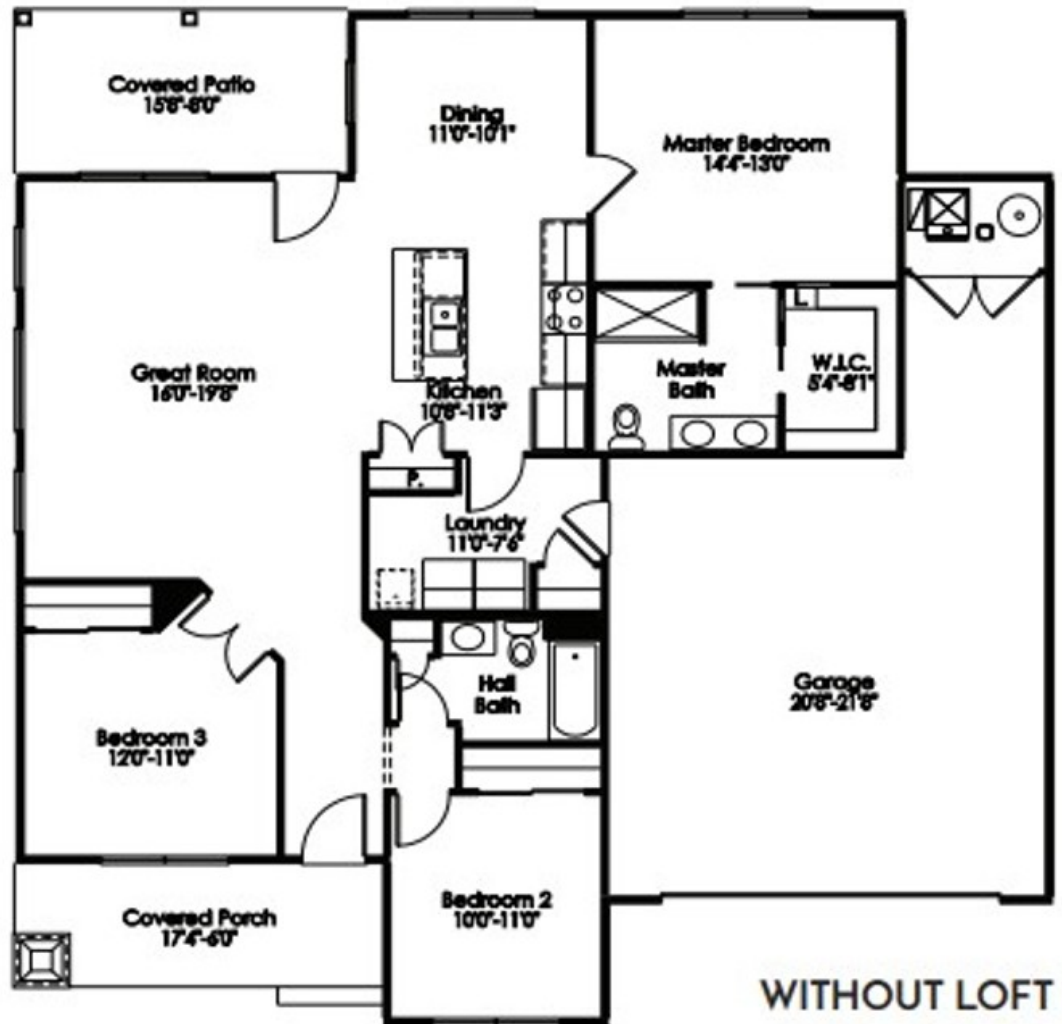


FINAL HOME | AVAILABLE NOW
Ranch | 3 Beds | 2 Baths | 2-Car Garage | 1442 sqft.
Snow removal & lawn care included with HOA dues

The final home available in Downing Farm in Washington Township, the Del Mar is one of our largest bungalow style homes in this award-winning neighborhood, just minutes from Centerville and Springboro. A welcoming covered front porch and rear porch frame the home's open living space, where the great room flows seamlessly into a well-appointed kitchen and dining area. The primary suite features a spacious walk-in closet, dual vanities, and an oversized shower. Thoughtfully designed with elevated finishes throughout, this main level home includes Pella Windows and Doors, shiplap accent walls, gas fireplace, luxury vinyl plank flooring, and professional landscaping. Now nearing completion, this home will be ready for a late winter move in and includes lawn care and snow removal through the HOA.

PEEBLESHOMES.COM | john@peebleshomes.com | (937) 313-9109

THE
DELMAR



Price, availability, and special offer subject to change without notice. Home sold as in. Some manufacturers warranties may apply. Some conditions may apply. This brochure is for illustration purposes only and is not a part of a legal contract. Floor plans, standard features, and optional features may vary and are subject to change without notice 6.5.25.